

CERTIFIED LAND CORNER RECORDATION

DESCRIPTION OF CORNER EVIDENCE FOUND, AND ORIGINAL RECORD (If known)

LOCATION

Found # 5 rebar, 6" below surface of road.

$\frac{3}{10} \frac{2}{11}$

G.L.O. record - Brass cap monument.

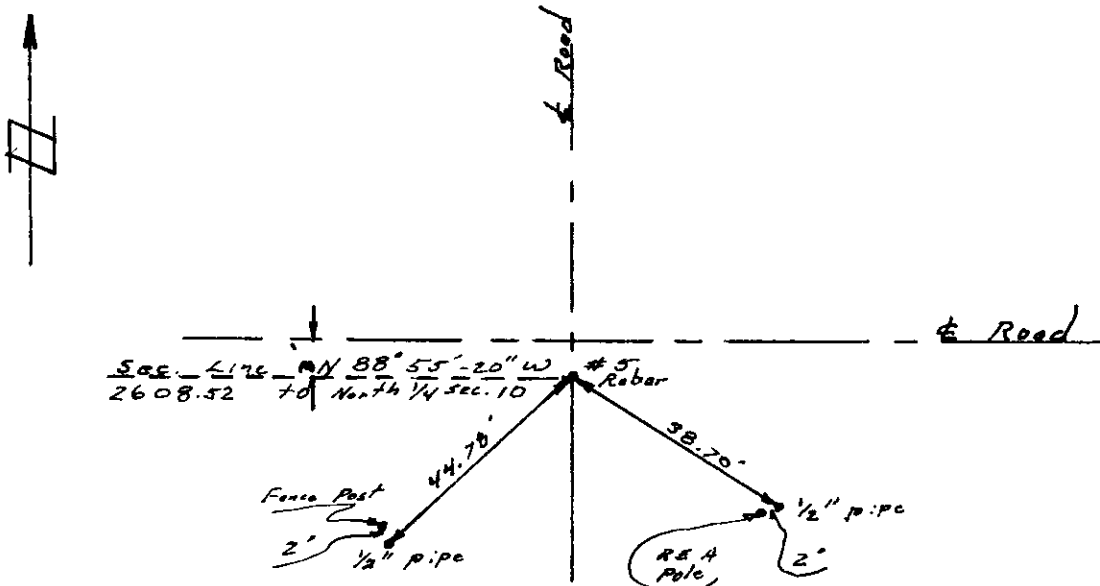
T 12 N, R 62 W
6th P.M.

DESCRIPTION OF MONUMENT AND ACCESSORIES ESTABLISHED
TO PERPETUATE THE ORIGINAL LOCATION OF THIS CORNER:

Left corner as found.

Set 1/2" pipe for witness corners to southwest and southeast.

SKETCH, WITH COURSE AND DISTANCE TO ADJACENT CORNER IF DETERMINED IN THIS SURVEY.
(May Sketch or Paste Reproduction on Reverse Side.)



I, Robert C. Corbet certify that I have carefully performed or reviewed the work done on the diagrammed corner as reported on this recordation form and approve the same.

Robert C. Corbet
Signature of Surveyor

I.S. 495
Registration No.

STATE OF WYOMING,
Office of Clerk and Recorder,
County of Laramie

This "corner record" was filed for record on the 6 day of January, 1975, was noted on the cross-index plat and is assigned page No. _____, in book No. _____.

Just C. Whitehead
County Official

Cross Index No. <u>E 17</u>	T. <u>12</u>	R. <u>62</u>	<u>6</u> Mer.
_____	T. _____	R. _____	Mer.
_____	T. _____	R. _____	Mer.
_____	T. _____	R. _____	Mer.
_____	T. _____	R. _____	Mer.
_____	T. _____	R. _____	Mer.
_____	T. _____	R. _____	Mer.

345961

Photographed

Indexed

Paid

Assessor

The state of Wyoming
 County of Laramie

This instrument was filed for
 at 12th o'clock P M on the
6 day of January
 A. D. 1925 and duly recorded in
 Book _____ on page _____

Paul C. Whitbeck

County Clerk & Ex-Officio Register of Deeds
 By *[Signature]* Deputy

[Faint stamp]